

# CERTIFICATE OF LOCATION OF GOVERNMENT CORNER

EAST QUARTER \_\_\_\_\_ Corner of Section \_\_\_\_\_ 19 \_\_\_\_\_, Township \_\_\_\_\_ 107N \_\_\_\_\_, Range \_\_\_\_\_ 39W \_\_\_\_\_

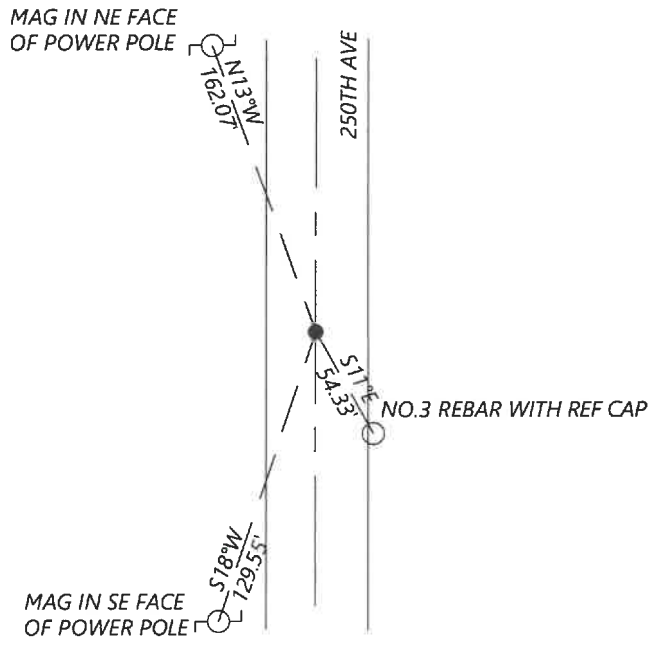
5th Principal Meridian, State of Minnesota, County of MURRAY

At the corner location shown on the sketch:

- On 8/27/2020 found a NO. 5 REBAR WITH "MN DNR" ORANGE CAP LS 18969, DOWN 0.2' BELOW GRADE  
DATE
- left monument as found       lowered monument       removed monument (explain)
- On \_\_\_\_\_ placed a \_\_\_\_\_  
DATE

19869

### SKETCH OF REFERENCE TIES



N.T.S.

Statement of evidence for this corner location is on back of this page.

I hereby certify that this document was researched and prepared by me or under my direct supervision and that I am a licensed Land Surveyor under the laws of the State of Minnesota.

Signature *Jim [unclear]*  
 Date 6/16/2021 License No. 45874

Title:

- Land Surveyor       Professional Engineer
- County Surveyor       County Engineer

### OFFICE OF THE COUNTY RECORDER

County of Murray

I hereby certify that this document was filed in the Co.

Recorder's office at \_\_\_\_\_ M. on the \_\_\_\_\_ day of \_\_\_\_\_ A.D. 20 \_\_\_\_\_

County Recorder Karen Brown

by JUN 22 2021, Deputy

DOCUMENT NO. \_\_\_\_\_

JASON LATZKE  
Minnesota License No. 45874

Statement of Evidence:

East Quarter Corner of Section 19, Township 107 North, Range 39 West, 5th Principal Meridian, Murray County, Minnesota.

- July 1861      *Corner in pond, Set witness corner (post in mound) 250lks north.*
- June 2009      *A survey in Section 18 and 19 by MN DNR of the Dovray Wildlife Management Area shows a  $\frac{3}{4}$ " x 24" rebar with cap marked "MN DNR LS 19839" at the corner.*
- June 2012      *Highway Department records show a steel pin with DNR Surveyor's cap was located. They listed the following coordinates:      N: 176705.16    E: 553564.18*
- Sept 2020      *Westwood Professional Services searched and found an iron with cap DNR LS-19839 at the corner. Coordinated fit 2012 Highway Department coordinated. Accepted found monument and set reference ties.*

Analysis of the recovered data, field evidence and survey measurements, indicates that the monument found is the correct perpetuation of this corner. For additional information concerning this corner please contact Westwood Professional Services.